



# the Leaflet



*Our mission is to conserve our natural heritage by deepening our knowledge of the plant world and achieving public understanding of the value plants bring to life.*

## Learn and Discover with BRIT

At BRIT, we believe that most people truly are curious by nature. Let us help you feed your curiosity with a healthy diet of classes, events, and activities.

- **Take a class** – Join us on First Saturday for one of our Permaculture or TERM classes. Sharpen your gardening skills or learn something new about plant or wildlife science. New classes will be added for Fall 2017. [Read More](#)
- **Read a book** – Join us for the BRIT Reads Book Club, learn something new and enjoy some lively conversations with fellow reading enthusiasts. [Read More](#)
- **Enjoy an exhibit** – The Madeline R. Samples exhibit hall plays host to a variety of exhibits by local, national and international artists working primarily in the field of botanical art. Stop in and enjoy these exhibits whenever you happen to be in the area or join us for one of our Gallery Night events. [Read More](#)



**Attend a lecture** – For the last 15 years BRIT has invited leading scientists and researchers to share their work with the Fort Worth community as part of our Brown Bag Lunchtime Lecture series. Join us on the first Tuesday of each month and learn about interesting projects that are taking place here and at partner institutions. [Read More](#)

## Sip at BRIT, Photography: People & Wildflowers

Join us on April 20 from 5:30 to 7 p.m. for the next in our series of happy-hour learning events occurring on the third Thursday of each month. Sip at BRIT begins with a half-hour mixer made festive with good wine from our generous vintner friends, Trefethen and LangeTwins, and tasty hors d'oeuvres compliments of Righteous Foods.

MacKenzie Hughes of Fort Worth Camera will give you the tips you need to capture the most beautiful photos of your loved ones among the wildflowers this spring. The bluebonnets and other wildflowers on our own BRIT landscape will be used for demonstrations.



To register, contact Sara Richardson at 817.332.2748.





FOOD • DRINK • MUSIC

## PRAIRIE NIGHT MAY 12

DOORS OPEN @ 6 PM

Bring a blanket or lawn chairs for dinner and music under the stars! Some of the activities include a photo booth, t-shirts on demand, giant Jenga, corn-hole, and more.

Early-Bird General Admission \$15; purchase tickets BRIT.org.

### PRAIRIE DAY - FREE

Mark your calendar to join us for this free family-friendly day of fun learning, demonstrations, and activities.

Sponsors are still needed, if you would like to sponsor any portion of this event, please give Tammie Crole at 817.332.7518.

Volunteers are needed during this event, please contact [Julie Donovan](#), [Hannah Kuhns](#), or sign up on the [Volunteer Calendar](#).



### Free Tours of our LEED Platinum Building

Are you curious about LEED buildings? Do you wonder what happens to the specimens botanists collect? Would you like to learn about research? The best way to brush up on any of these subjects is to take one of our free public tours. Public tours are held every Thursday at 1:30 and most First Saturdays of each month at 10:30. Public tours are free and reservations aren't necessary, unless you are bringing more than ten of your closest friends.

One of our engaging Ambassadors would love to share the mission of BRIT with you and your friends. Private tours may be scheduled at a time convenient to your schedule for a small fee. If it has been a while since you have toured, or you keep meaning to tour, please come visit us and learn the latest. If you would like more information about volunteering, please contact [Julie Donovan](#), Director of Volunteers and Visitor Relations, at 817.546.1846.



## A Trip to Seville Farms

A couple of weeks ago, over half of the BRIT building was eerily empty for a day as the whole research department set off toward Mansfield to visit Seville Farms. Seville Farms is owned by Billy Brentlinger, a key member of BRIT's Board of Directors. Seville Farms is a large-scale plant nursery providing annuals, perennials, and ground covers to numerous garden centers across Texas. If you've ever bought flowers for your garden from a local Lowes or Home Depot, they might have been from Seville Farms! The farms have five facilities containing over three million square feet!

BRIT researchers had a fascinating, educational, and fun experience seeing the vast nursery in Mansfield. The group walked past outdoor fields of propagated plants; assembly lines; mechanized seed-sowers; freezers; hot, humid greenhouses; and truly staggering numbers of plants. The greenhouses contained thousands and thousands of plants, from endless rows of seedlings barely a few millimeters tall to brilliantly flowering potted plants of every size, shape, and color on their way to a store. Billy Brentlinger and John Wilson gave the tour and explained all parts of the operation, answering abundant questions that naturally occur when 15 botanists are thrown in the middle of thousands of plants. Thank you, Billy and John, for a truly enlightening morning!



## Bella and Spring are Blooming at BRIT!

Wednesday, March 1 Saturday, March 4 Tuesday, March 7	Saturday, April 1 Tuesday, April 4 Wednesday, April 5	Tuesday, May 2 Wednesday, May 3 Saturday, May 6

For more information, visit [www.brit.org](http://www.brit.org).

Bella welcomed spring with children and families in March with the reading of **and then it's spring**. This sweet book by Julie Fogliano is a story of a little boy who waited patiently for his seeds to sprout. Bella's families chose a "sprout" in our front yard meadow to observe its growth next time they come to BRIT. Won't you join us in April for **The Dandelion Seed** by Joseph P. Anthony? We'll enjoy an interactive read aloud in the Burl Children's Library, activities in the Tree House, and we'll check on those sprouts!



## Bella, Books, and Botany: Beyond BRIT and in the Community

March brought excitement and opportunities to explore the renewal of spring with children in the greater community. With the generous support of donors, Bella, Cheryl Potemkin, and Pam Chamberlain deliver **quality children's literature and best practices** in early childhood education to various childcare sites at FWISD schools, and in six Pre-K classrooms.

For more information, please contact [Kimberly Whitlock](mailto:Kimberly.Whitlock@brit.org) at 817.546.1958.



## Hidden Treasures: *The Gardener's Dictionary*

Among BRIT's rare book collections are several books with the nondescript title *The Gardener's Dictionary*, considered one of the greatest horticulture publications of all time. These books were produced between 1731 and 1768 and are of a variety of sizes, denoting the different abridgments, editions, and volumes. There are also two large folios of illustrations.

Philip Miller was an esteemed botanist and horticulturalist in England and was the Head Gardener at Chelsea Physic Gardens from 1722 until just before his death in 1771. He transformed the garden to a richly diverse

and beautiful attraction and developed an extensive seed exchange program. His great talents and reputation catapulted *The Gardener's Dictionary* to success; the first edition includes a list of 400 subscribers, illustrating the great demand for Miller's work.

Due to its expansive publication period, *The Gardener's Dictionary* provides a rare look into the fast-changing science of botany in the 18th Century. Especially notable is the eighth edition, published in 1768. Here Miller adopted the binomial classification system, dropping the cumbersome pre-Linnaean system of descriptive Latin phrases.



**Summer means...**  
**Camp BRIT**  
Adventurous by nature.



**Bella Goes to Camp**  
This half-day camp is for Pre-K or K children, ages 4 or 5.  
**Monday–Thursday: 9 a.m.–11:30 a.m.**  
BRIT Members: \$90 | Non-BRIT Members: \$110  
June 12-15 | June 19-22



**Little B.I.T.s™ - Little Botanists In Training**  
This full day camp is for children entering 1<sup>st</sup> or 2<sup>nd</sup> grades, ages 6 or 7.  
**Monday–Thursday: 9 a.m.–3:30 p.m.**  
BRIT Members: \$200 | Non-BRIT Members: \$250  
June 26-29 | July 10-13

**My Plants, My Place**  
This full day camp is children entering 3<sup>rd</sup>, 4<sup>th</sup>, or 5<sup>th</sup> grades, ages 8, 9, or 10.  
**Monday–Thursday: 9 a.m.–3:30 p.m.**  
BRIT Members: \$200 | Non-BRIT Members: \$250  
June 26-29 | July 10-13

Visit <http://brit.org/education/camp-brit> for more information and to register.

## Host Your Event at BRIT

With wool carpeting, bamboo ceilings, and reclaimed cypress wood walls, BRIT is the sustainable and modern location for your next event. From weddings to reoccurring corporate meetings, you can host it all here.

Our Commons and Exhibit Hall are ideal spaces for formal presentations of varying sizes. The Oak Terrace is a charming outdoor spot overlooking our back Prairie. Don't forget about our Atrium! With floor-to-ceiling windows and LED lit wall, the Atrium calls for a beautiful evening reception.

Book your event by contacting [Katherine Campbell](#) at 817.332.7750.







## Field Study Trips

Discovering bluebonnets in full bloom in our prairie was an easy feat for our visiting young botanists from High Point Academy, White Settlement. These curious 2nd grade learners were thrilled with the opportunity to take part in a scientific environmental experience offered during a recent field study trip.

Every child collected metadata while in the prairie, evaluated soils in the classroom, created an herbarium specimen, and reviewed related science stories. Learners were intrigued and had many questions as they interpreted the story of our plant to planet. There are limited Field Study Trips available in April and May. Contact our [BRIT SEED](#) School for further information.



## Celebrate Those Who Create a Better World

Prairie dogs tend to be celebrated for their larger ecological virtues. In the grasslands across the central and western

United States, their intricate underground colonies—called prairie dog towns—create shelter for jackrabbits, toads, and rattlesnakes. The bare patches of ground created by their grazing and burrowing attract certain insects that feed a variety of birds.

BRIT also celebrates our community partners who help make possible the many dynamic public programs and unique and inspiring exhibits offered at BRIT. They also support critical world-class research within our scientific, educational, social, cultural, and business community. So we say THANK YOU to the follow Prairie Day Supporters:

### PRESENTING SPONSOR



### BIRDS OF PREY SPONSOR



### WORLD OF BATS SPONSOR

Berlene & Jarrell Milburn

### MONARCH SPONSORS

Rae & Michael Hyatt  
Peloton Land Solutions, Inc.

### PRAIRIE CHICKEN SPONSORS

Meta Alice Keith Bratton Foundation  
Kimberly & Joseph DeWoody  
Oncor

### SUPPORTING SPONSORS

Louise B. Carvey  
B.F. Hicks  
Kay & Will Stansbery  
Carole D. Findlay

### IN-KIND SPONSORS

Seville Farms, William Brentlinger  
Mrs. Renfro's, Julie & Doug Renfro  
Tarrant Regional Water District

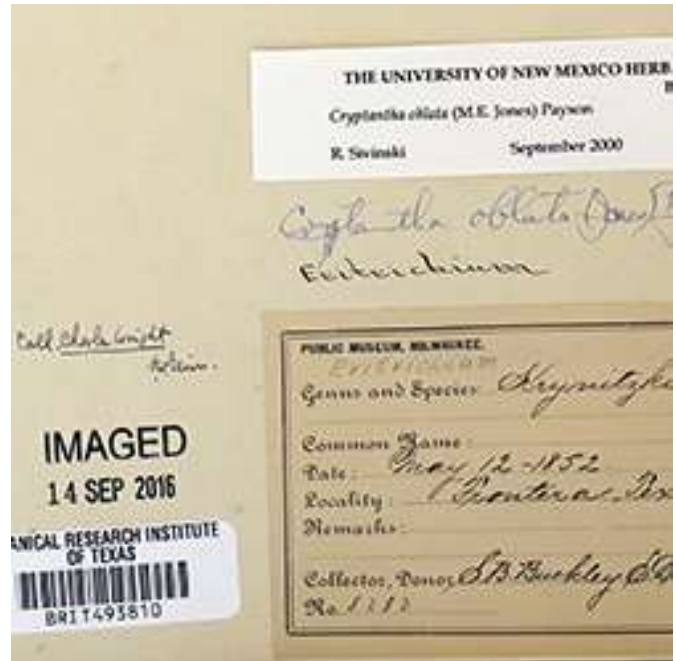
Blue Mesa Grill  
Dallas Arboretum & Botanic Gardens



## Cabinet Curiosities - Frontera, Texas

The BRIT herbarium contains many treasures that have been appreciated by visitors to our collection, and through our digitization program, we are steadily increasing access to these specimens and the stories they tell. One such specimen is a collection of **Cryptantha oblata**, a forb in the Borage family found in semi-arid regions of the American Southwest. At first glance, we see a small, densely hairy plant about 12 cm tall and still bearing the remnants of last year's flowers; but what we will focus on in this article are two details written by two different hands that make this specimen a **Cabinet Curiosity**.

The first detail: is the collection location: Frontera, Texas. Written in flowing fountain ink, a cursory search of the name will not turn up any currently registered town or hamlet in Texas, only a small article by the Texas State Historical Association. The second detail is a much smaller note in ballpoint pen that reads "Coll: Charles Wright." Together, these details reveal a much greater story behind our specimen, a story about the early years of botany in Texas.



## Can Your Landscape Be Beautiful Yet Sustainable?

Is your landscape using too much water? Are you interested in helping pollinators and using native species? Are you tired of spending lots of time maintaining your landscape?

Join us on Thursday, June 1, to learn more about the collaborative project between BRIT and the General Services Administration (GSA) regarding high performance landscapes. The principal investigators, Heather Bass (BRIT) Amy Belaire (BRIT Research Associate, Urban Ecologist), and Heather Venhaus (BRIT Research Associate, Environmental Designer and site sustainability consultant), will be providing a presentation about the preliminary data collected from the first year of this project. Stay tuned for more information.

## Green Revolution

Green Revolution is a vibrant environmental STEM, out-of-school time, positive youth-development program. This program exposes underrepresented youth to the effects of 21st Century issues on human and environmental health; provides hands-on, formative experiences to the impact of literacy, learning, and leadership on current environmental issues; and develops values, character, and civic duty for middle-school- and high-school students.



Spring Break at Green Revolution always means one thing: student growth at Camp El Tesoro.

During this special time of year, Agents can explore nature, discover new talents, try new activities, gain independence, and make lasting memories through a range of interactive **activities designed to build relationships and foster their natural curiosity.** And, of course, it's also fun.

This experience was repeat with environmental education, fishing, hiking, wildlife viewing, nature photography, archery, rock climbing, zip-lining, and outdoor cooking for 42 of Green Revolution's Agents of Change. Among learning about the necessity of unity, teamwork, community, and communication, our Agents also learned the importance of goal setting and grit, "Aim for what you want and keep throwing until you get it."

Hats off to Camp El Tesoro for facilitating such an engaging and wonderful learning experience for Green Revolution!





#### APRIL

1st - Bella's Story Time; Plant ID; Tour; TERM; Permaculture 101  
4th - Bella Book & Nature Club  
5th - Bella Book & Nature Club; Brown Bag  
17th - BRIT Reads Book Club  
18th - Teacher Tuesday  
20th - Sip at BRIT, Photography: People & Wildflowers  
Every Thursday - BRIT tours at 1:30 p.m.

#### MAY

2nd - Bella Book & Nature Club; Brown Bag  
3rd - Bella Book & Nature Club  
6th - Bella's Story Time; Plant ID; Tour; TERM; Permaculture 101  
12th - Prairie Night  
13th - Prairie Day  
15th - BRIT Reads Book Club  
16th - Teacher Tuesday  
18th - Sip at BRIT, Sip and Walk Plant Tour  
Every Thursday - BRIT tours at 1:30 p.m.

Additional information can be found at [brit.org](http://brit.org).

Botanical Research Institute of Texas 1700 University Drive | Fort Worth, Texas 76107

Phone: 817.332.4441 | Fax: 817.332.4112

Copyright © 2017 Botanical Research Institute of Texas